

Pipe Ducting System

POLO-RDS evolution



POLO-RDS evolution – pipe ducting system made of polypropylene for DA 8 - 250 utility pipes

Featuring many clever details, the pipe ducting system POLO-RDS evolution guarantees simple, safe and impermeable wall ducts for cables and pipes up to DN/OD 250.



Impermeable wall ducts for cables and pipes

1. Ribbed pipe made of PP

The ribbed pipe made of PP represents the basic element of the system. Intelligent product details combined with excellent material properties (immense rigidity and strength, high impact strength and crack resistance, as well as being environmentally friendly) provide optimum protection of the utility duct pipe. Integral flanges at both ends of the ribbed pipe, together with a spring element, ensure first class fitting in the formwork. Nail holes in the flange fasten the ribbed pipe simply without the need for any auxiliary formwork. The oblique ribs of the pipe help to improve its bedding in the concrete, thus providing maximum support and impermeability.

2. Sealing element

The sealing element of the POLO-RDS evolution system impresses with a particularly clever detail: the well-proven “onion skin” structure. Depending on the diameter of the utility pipe routed through the wall, one or more layers can simply be removed from the sealing element. In this way its aperture can be optimally adapted to any pipe diameter. An accessory sealing element with fixed bores (8 - 18 mm) is available (**Item 3**), wherever several cables or pipes have to be safely and impermeably routed through a wall. All sealing elements for the ribbed pipes DN 100 and DN 200 are hinged; thus pipes can easily be integrated even after installation. The sealing elements for the ribbed pipe DN 300 are one-piece elements. Impermeability is achieved by tightening the screws and thus pressing in the sealing element.



POLO-RDS evolution – Complete packages



Complete package 1 for da 15 - 50 utility pipes

(Can be extended downwards to diameters of da 8, and upwards to a diameter of da 63.)

Package 1 consists of the ribbed PP pipe DN 100 with a standard assembly length of 30 cm and two hinged sealing elements, which are constructed using the onion skin structure. The POLO-RDS evolution package 1 is suitable for smooth utility pipes with an outer diameter of 15 - 50 mm.

An additional item extends the range of application as far as the diameter of 63 mm, while a sealing element with multiple ducts extends the range downwards to da 8 mm.



Complete package 2 for da 50 - 125 utility pipes

(Can be extended upwards to a diameter of da 160.)

Package 2 consists of the ribbed PP pipe DN 200 with a standard assembly length of 30 cm and two hinged sealing elements, which are constructed using the onion skin structure. Package 2 is suitable for smooth utility pipes with an outer diameter of 50 – 125 mm.

An additional sealing element extends the range of application of POLO-RDS evolution to include pipes with an outer diameter of 160 mm.



Complete package 3 for utility pipes DN/OD 160

Package 3 consists of the ribbed PP pipe DN 200 with a standard assembly length of 30 cm and a hinged sealing element. Package 3 is suitable for smooth utility pipes with an outer diameter of 160 mm.



Pipe ducting system for utility pipes up to da 250

The ribbed pipe DN 300 accommodates pipework of the dimensions DN/OD 160, 200 and 250. The standard assembly length of the ribbed pipe is 30 cm.

For greater ease of assembly and improved safety.

The POLO-RDS evolution pipe ducting system – tailor-made for the demands of construction sites – provides a convincing argument thanks to the superior ease of assembly and its safety in application.



Simple assembly

Nail holes in the flange ensure quick and accurate assembly without auxiliary formwork.



Fastening in the formwork

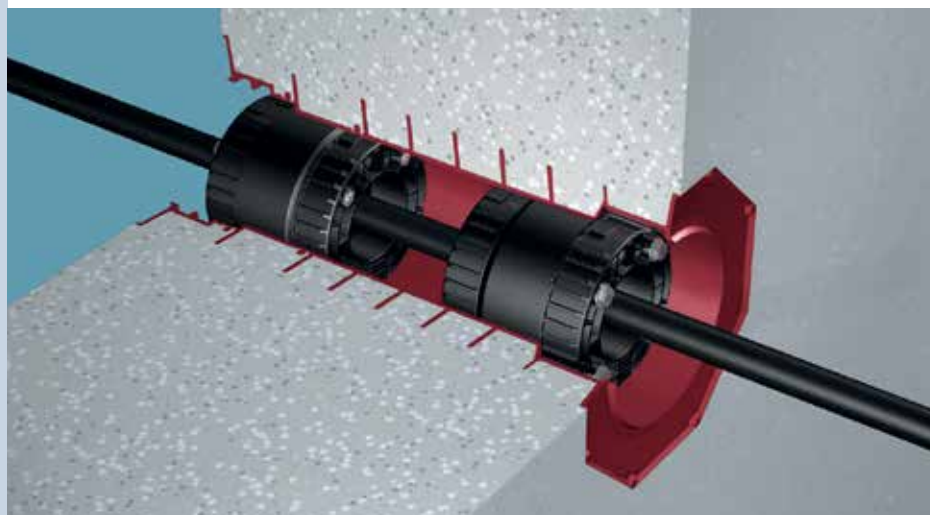
Special features, such as the spring element or the wall flange with press-in edge, guarantee that the element is optimally fastened and braced in the formwork.



Clean wall opening

Thanks to the ribbed pipe there is a clean opening in the wall so that the utility pipe can be routed securely and impermeably.

Impermeability all round.



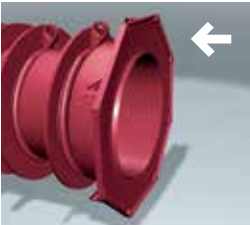
The principle of simplicity – pipe ducting for utility pipes da 8 - 250

Numerous clever product features ensure a user-friendly, simple assembly.



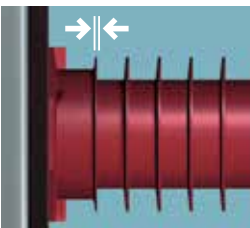
Shortening and lengthening

Two tear-off elements allow the ribbed pipe to be easily shortened to fit walls of either 20 or 25 cm thickness. Where the wall thickness exceeds 30 cm, the extended ribbed pipe with an assembly length of 60 cm is used.



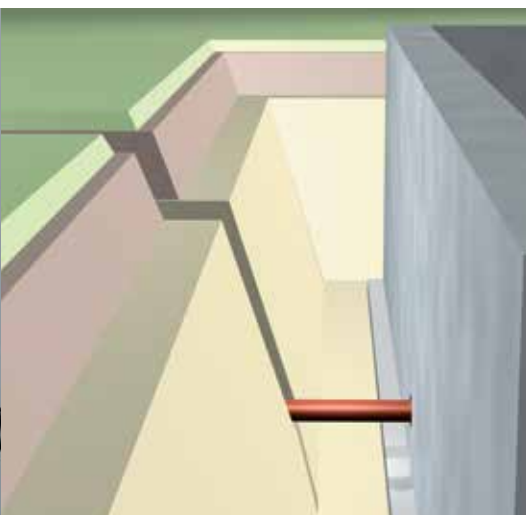
The wall flange

The press-in edge of the wall flange ensures that it is properly pressed against the formwork wall and prevents laitance from seeping into the ribbed pipe.



The spring element

This specially shaped elastic section of the ribbed pipe ensures its adaptation to formwork tolerances and guarantees optimal bracing in the formwork.



Settlement protection

A protective pipe inserted into the flange of the ribbed pipe on the outer surface of the cellar wall reliably protects the utility pipe from settlement occurring in the backfill of the foundation ditch. Lip seals inserted into the flange steady the inserted protective pipe.

The advantages of **POLO-RDS evolution**

Impermeable pipe ducting system for cables and pipes up to DN/OD 250
resolves the problem of “wet cellars” and is suitable for unproblematic use in virtually every type of application.

Numerous innovative product features
optimise the effectiveness and safety of the system.

Sealing elements with flexible components
allow pipes to be fitted without difficulty, even at a later stage.

Superior ease of assembly and excellent safety in application
guarantee the simple installation of the system.

The ribbed pipe made of polypropylene
stands for impermeability, safety and ecological friendliness.

To allow retrofitting
the sealing elements are adjusted to the diameters of the drill bits.

Very high level of operating safety and long service life
thanks to high resistance to temperatures and chemicals.



Submersible pipe socket

The pipe socket of a standard sewage pipe up to DN/OD 200 can be submerged in the ribbed pipe of the POLO-RDS evolution pipe ducting system, and is then fastened with a sealing element. **The advantage:** Very little space is required in the transition area from downpipe to horizontal pipe, offering a visually attractive, practical solution!



POLOPLAST.
A WIETERSDORFER GROUP COMPANY.

© Copyright. All contents and graphical representations are protected by copyright and, even in altered form, they may only be reproduced, published or distributed following the express written approval of POLOPLAST.

01/10.12/2.000_EN_wanted.co.at

Please refer to our technical instruction manuals.

poloplast

POLOPLAST GmbH & Co KG
A-4060 Leonding . Austria
Poloplast-Straße 1
T +43 (0) 732 . 38 86 . 0 . F +43 (0) 732 . 38 86 . 9

office@poloplast.com
www.poloplast.com