

HC-Mini Omega



HC Mini-Omega is an construction joint profile equipped with a continuous load transfer system and with anchors welded to both sides. It is suitable for lightly loaded floors made of concrete or screed.

The side-mounted, T-shaped anchors feature a 6.8 mm hole to support, level, and fix the profile. In addition, four of the anchorages per profile have an M8 threaded hole for on-site use of height adjustment screws as additional option.

Important:

The Mini-Omega profiling is eccentric to the overall profile height. When installing the profile, always make sure that the higher vertical section of the profile points upwards.

When pouring, ensure correct compaction of the concrete along the joint edges and make sure to finish the concrete or screed exactly at the top level of the joint.

As the installation of HC Mini-Omega mainly depends on its application and the structure or subbase below, we show here after just couple different installation pictures to illustrate the different possibilities:

Example 1:

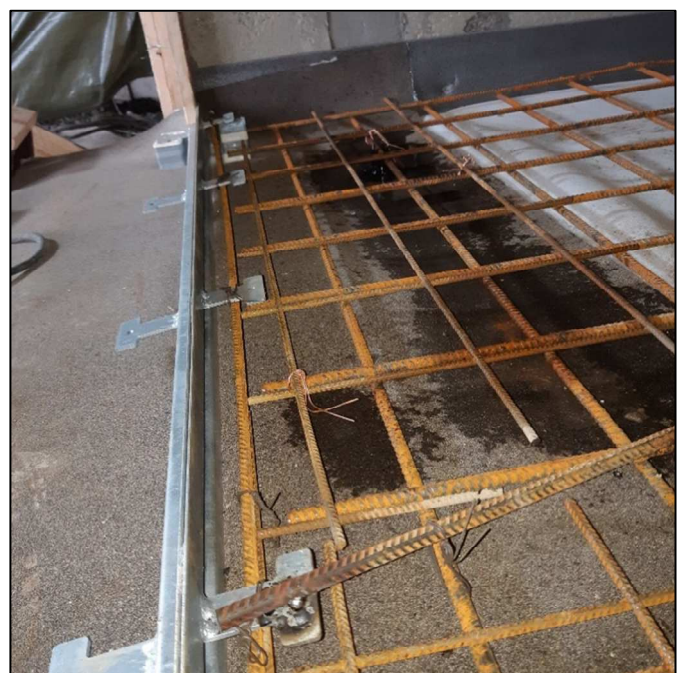
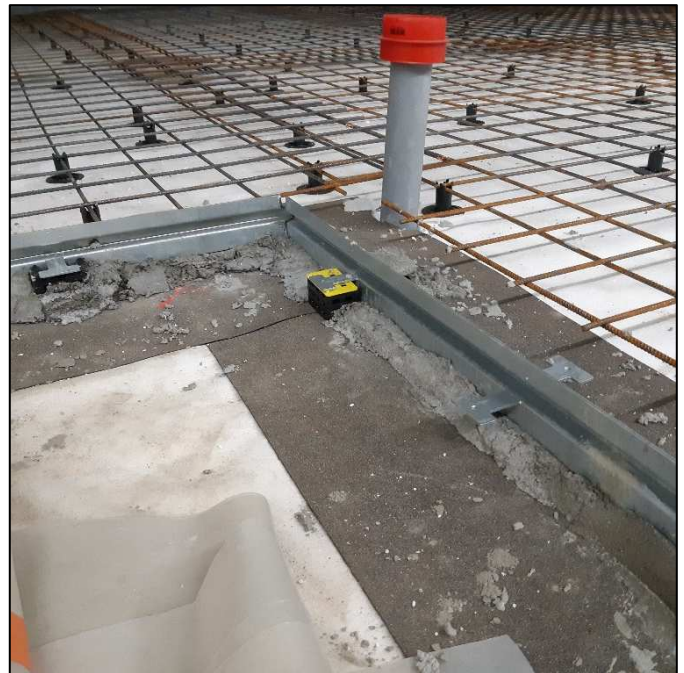
80 mm fibre reinforced concrete on hollow core slab and insulation with fixing dowels in the insulation



Example 2:
Overlay with floor heating on insulation, adjusted with plastic plates and fixed with concrete plots either side:



Example 3:
Overlay on insulation with classic reinforcement, adjusted with plastic plates and partially fixed with concrete, partially welded to the wire mesh:



Document issued March 2021, Hengelhoef Concrete Joints nv. reserves the right to alter the products without notice.
©COPYRIGHT 2021 by Hengelhoef Concrete Joints nv.



HENGELHOEF
CONCRETE JOINTS

Hengelhoefstraat 158 Zone 1B, B-3600 Genk
T. +32(0)89 32 39 80 • F. +32(0)89 32 39 88
E. info@hcjoints.be

www.hcjoints.be